

Pixellot

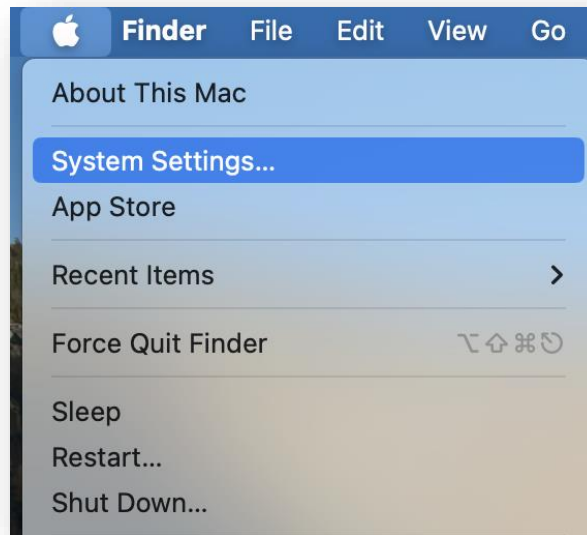
Uploading Your Games Using Your Laptop

To enable this ability, you will need to adjust a couple of quick settings on your laptop first to allow for a stable connection via the ethernet cable to the Air camera.

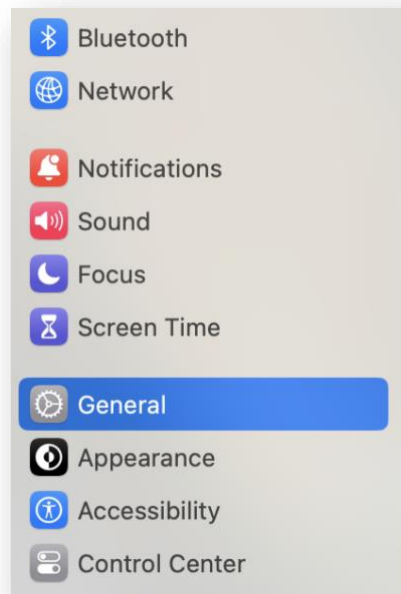
You will need an available ethernet port either on your laptop or through an adapter.

For Mac Users

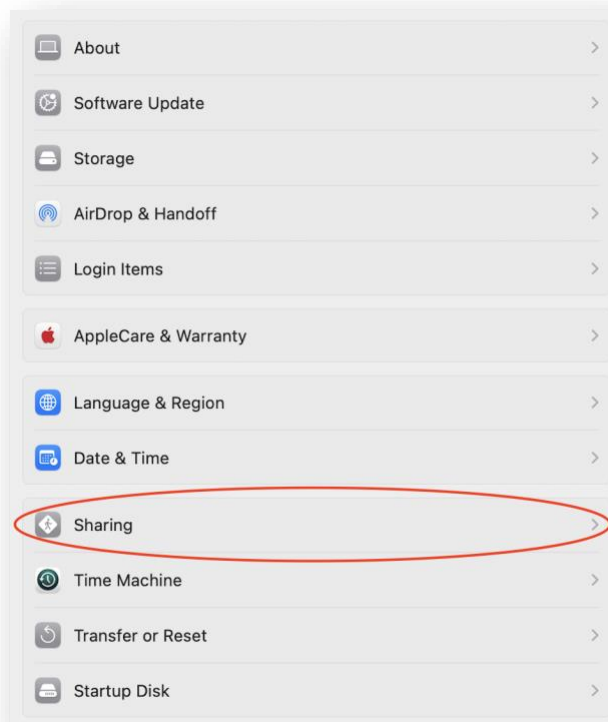
1. Open System Settings



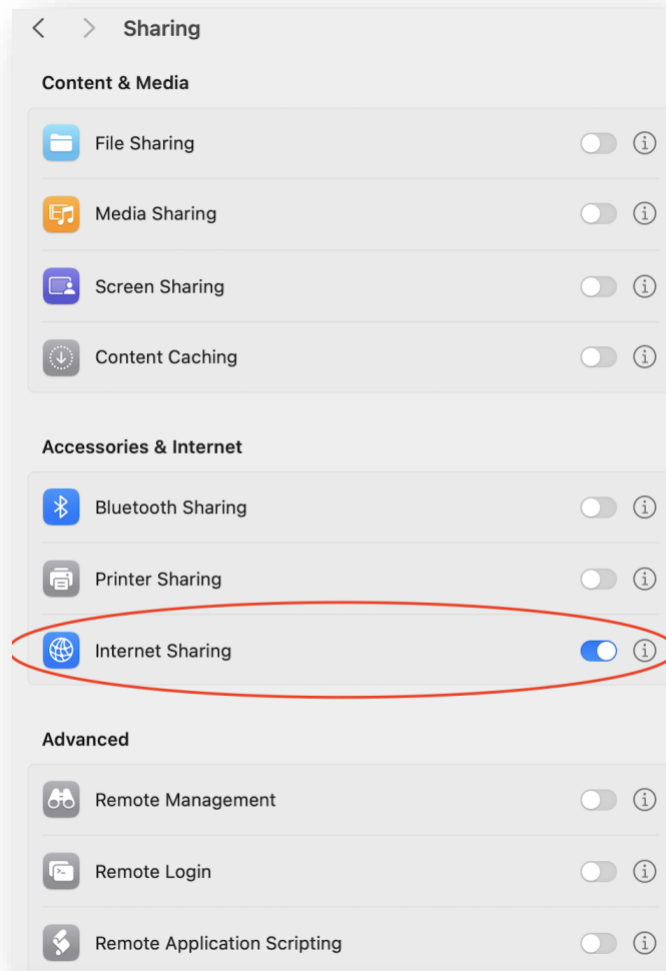
2. Select General



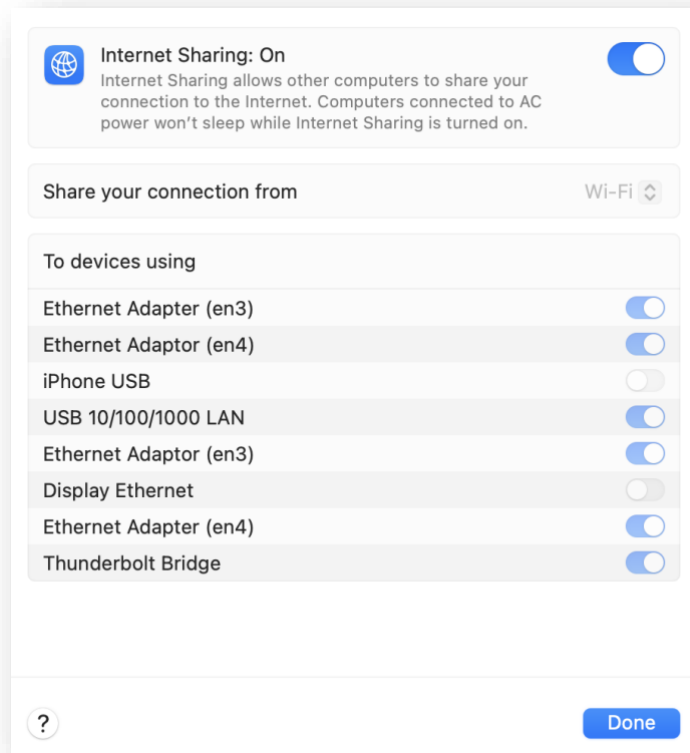
3. Select Sharing



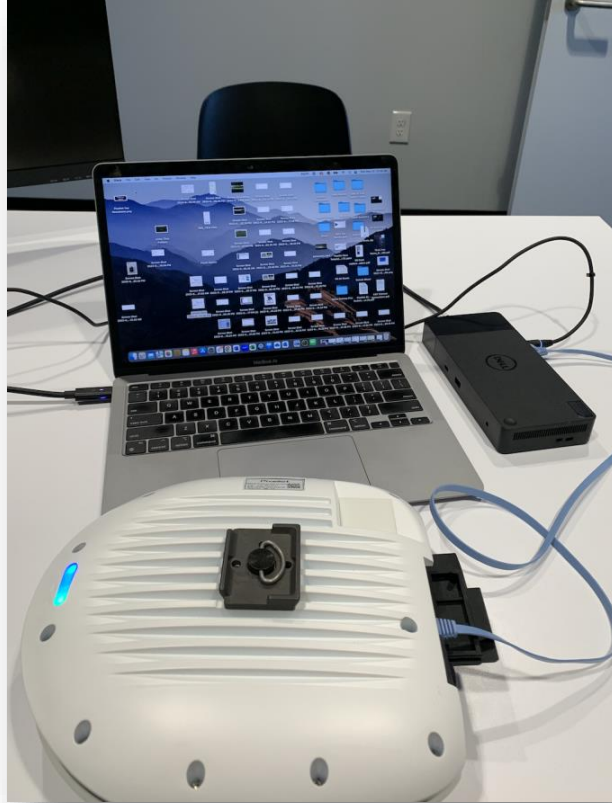
4. Turn on Internet Sharing and select the information icon.



- Once in this screen, select the available ethernet ports to enable the network connection. Select Done when completed.



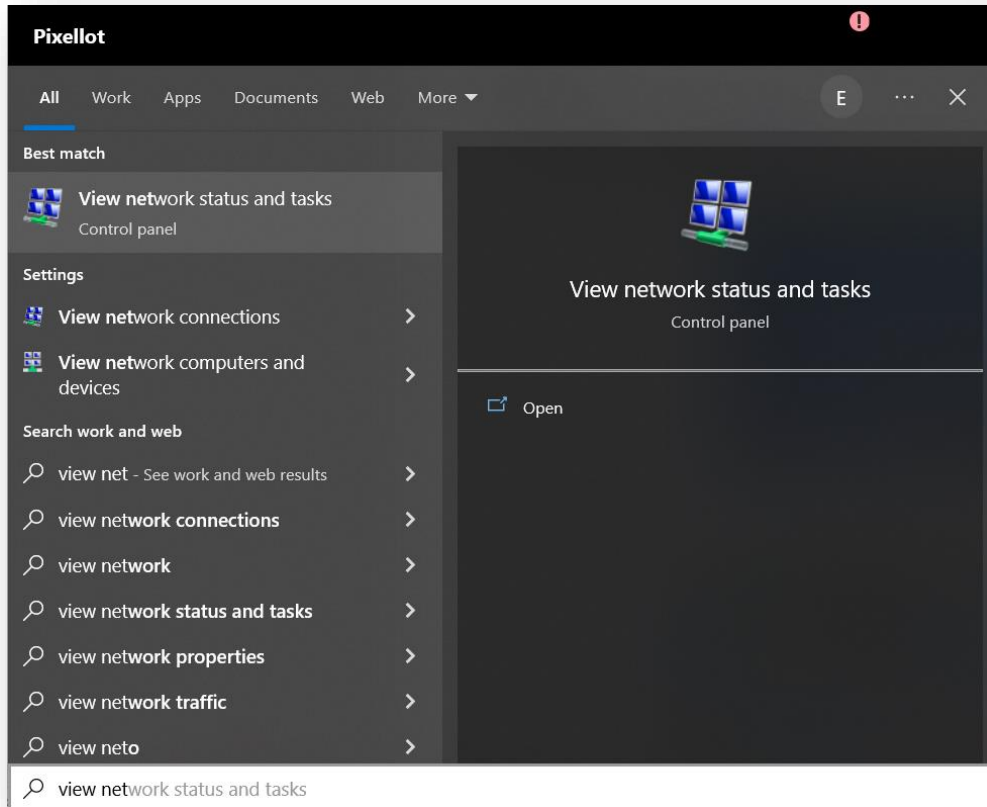
6. After completing these settings, plug the Air camera into the ethernet cord connected to the laptop or adapter. Turn the camera on. Once the blue LED lights are shown on the camera, this signifies it is connected to the network and is ready for upload.



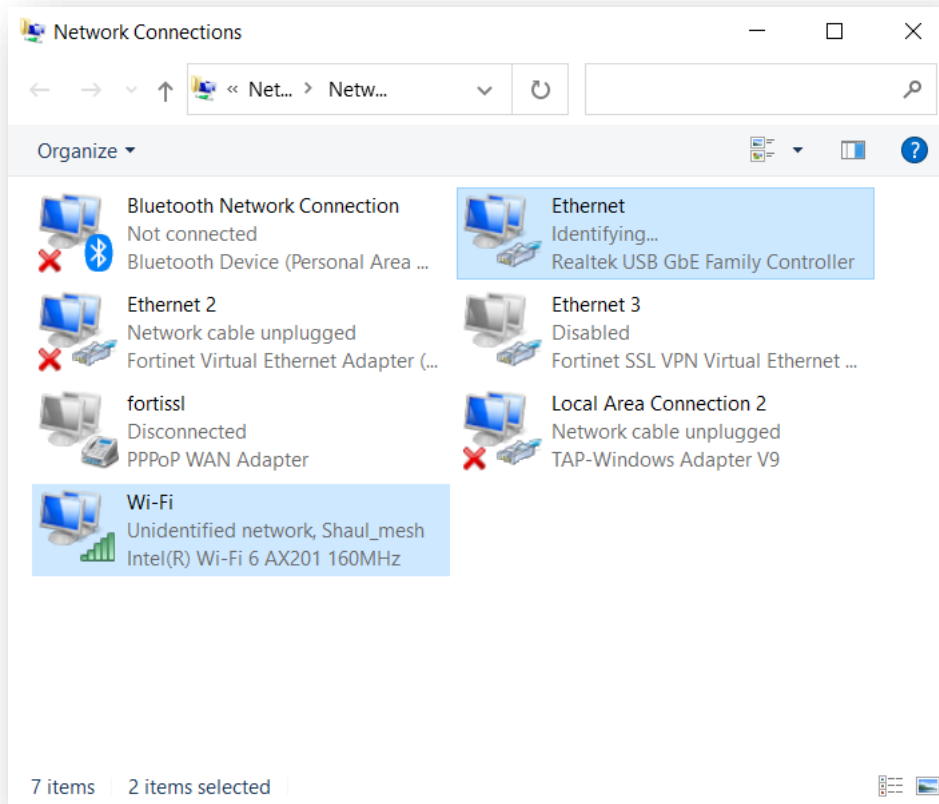
If you have questions, please email us at you.support@pixellot.tv

For PC Users

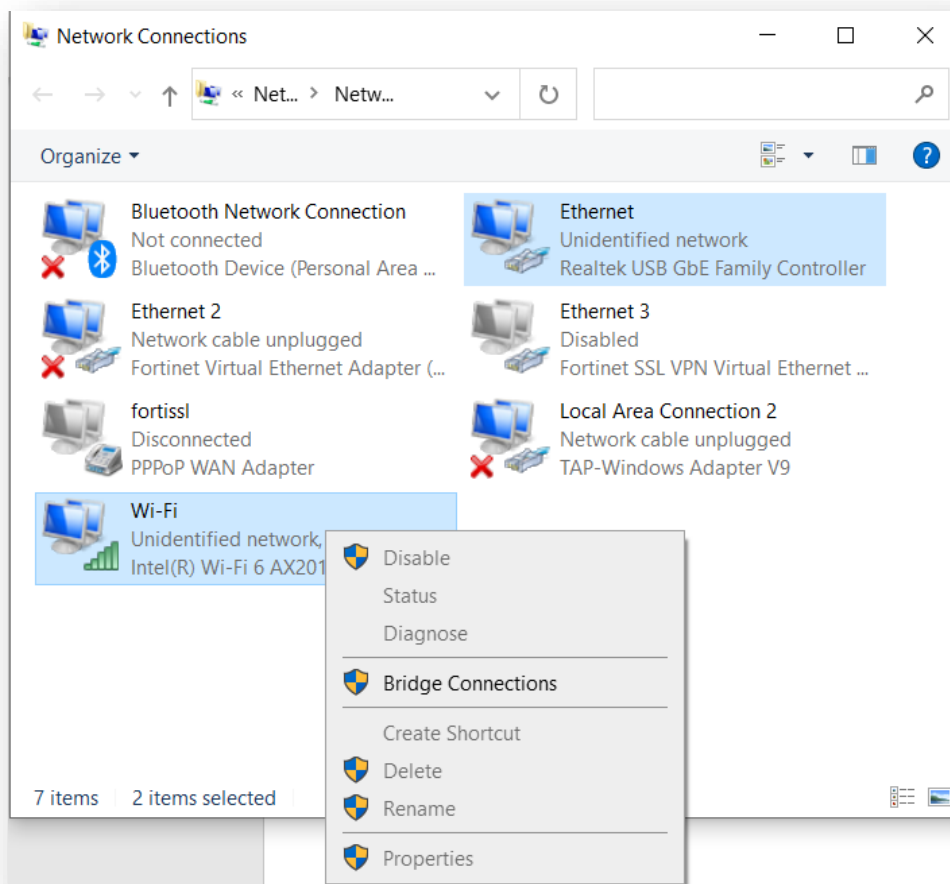
1. Connect the PC to a WiFi network.
2. From the start menu, open “view network connections”.



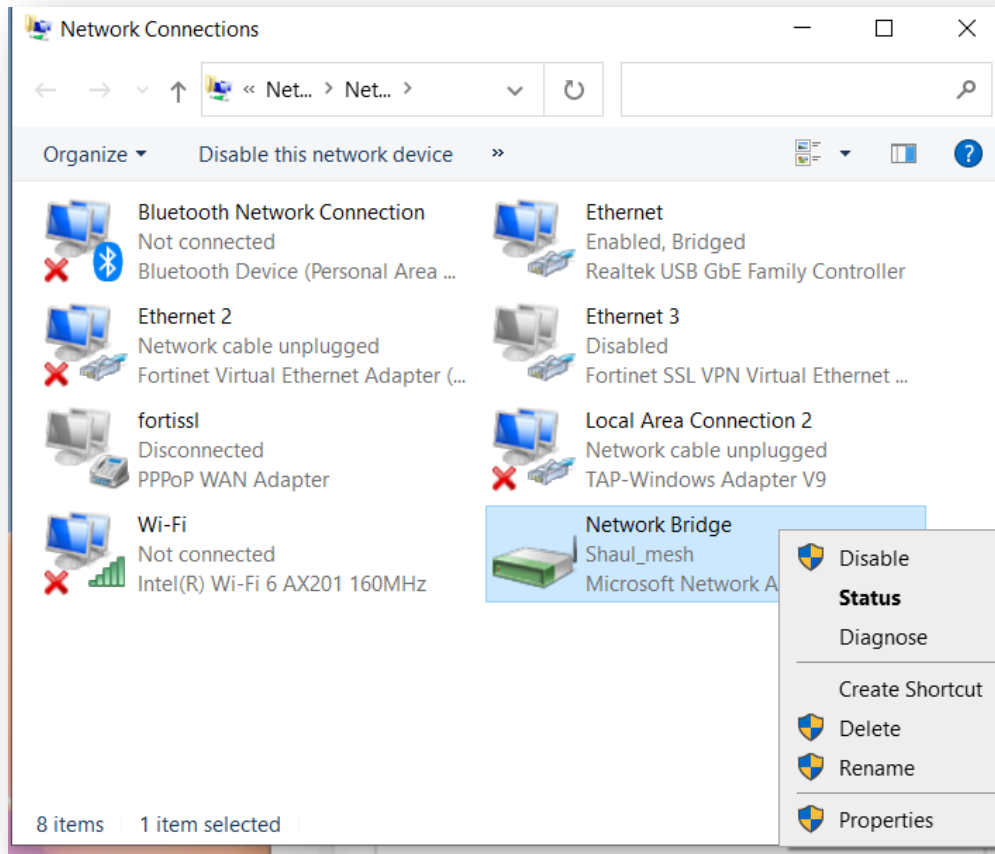
3. Select both WiFi and Ethernet by holding the CTRL button and left clicking the mouse.



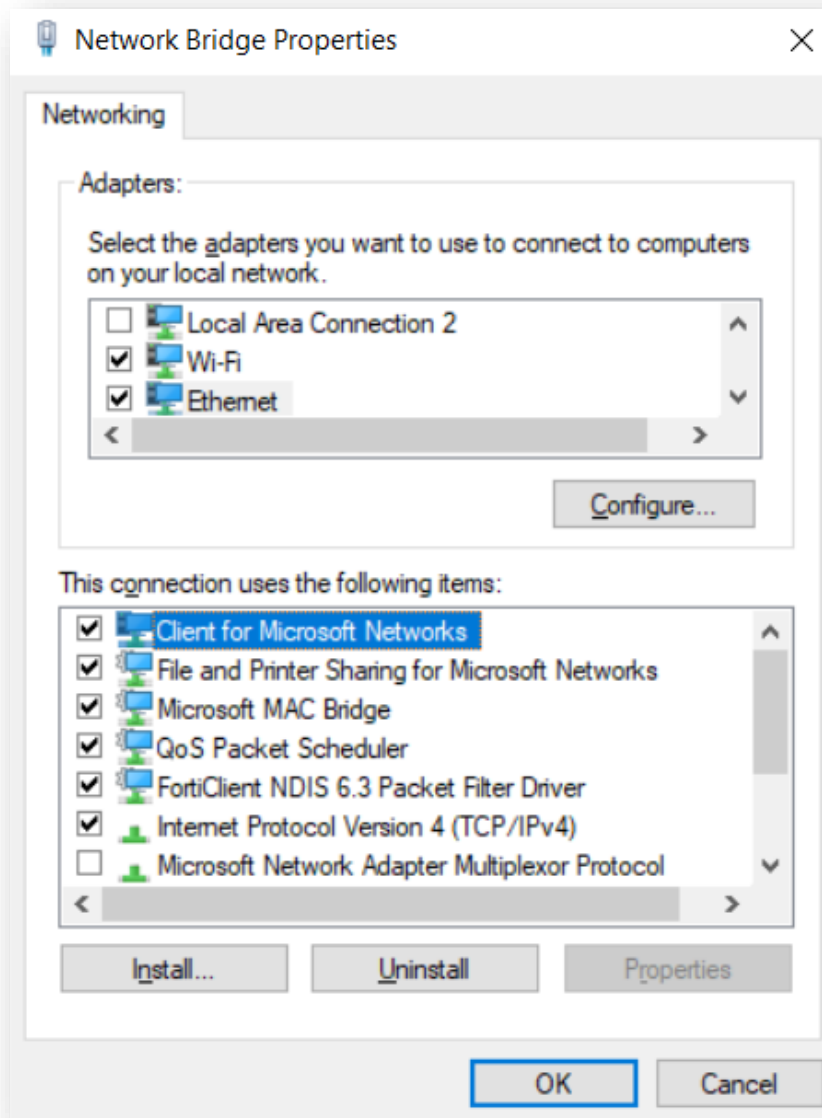
4. Right click on the WiFi network and click on “Bridge Connection”.



5. Right click on network bridge and select “Properties”.



6. Make sure that Ethernet and WiFi are selected.



7. After completing these settings, plug the Air camera into the ethernet cord connected to the laptop or adapter. Turn the camera on. Once the blue LED lights are shown on the camera, this signifies it is connected to the network and is ready for upload.



If you have questions, please email us at you.support@pixellot.tv